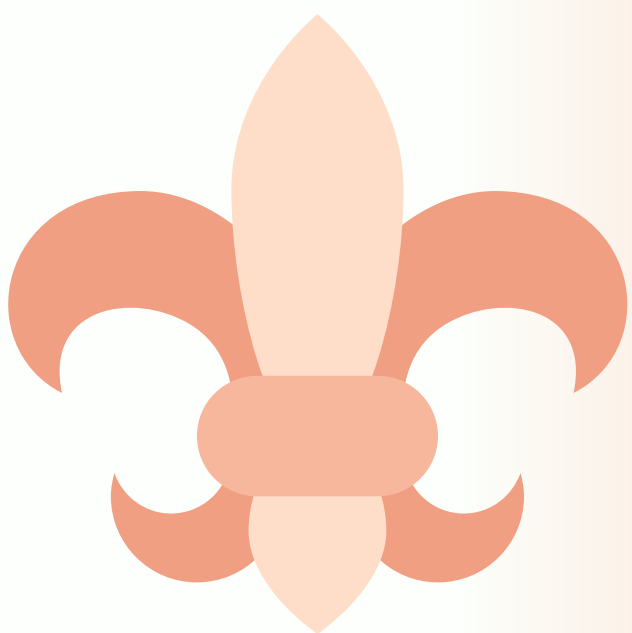
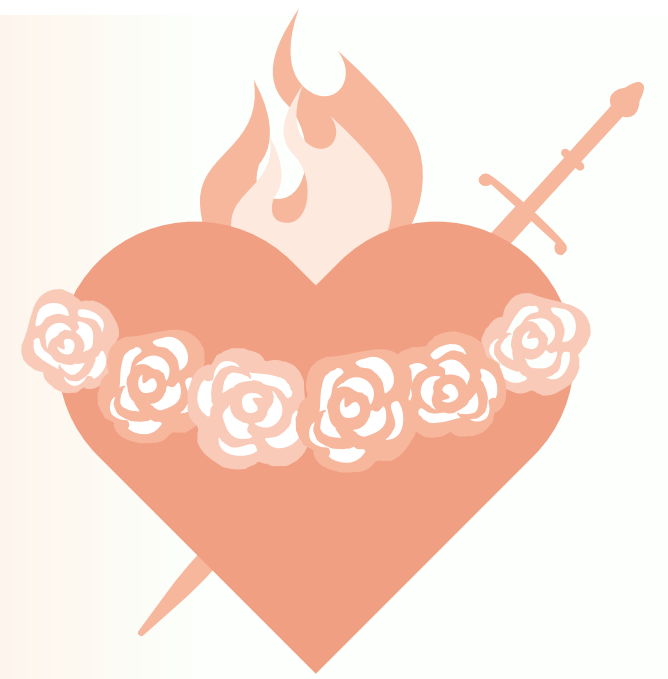


MARIAN SYMBOLS



The **Auspice Maria** is a symbol consisting of the intertwined letters "A" and "M," which represent Ave Maria. The Latin phrase "Auspice Maria" translates to "Under the Protection of Mary." It signifies reliance on Mary's intercession and protection.

Mary's **Immaculate Heart** burns with love for humanity. The imagery of roses encircling her heart shows her purity. The sword is a reminder of her Seven Sorrows, and where Scripture that says, "and you yourself a sword will pierce" (Luke 2:35).



Fleur-de-lis is French for "the lily flower". The three petals of the symbol represent Mary's radiance, royalty, and purity. They also symbolize the Father, the Son, and the Holy Spirit.

JMJ is an abbreviation that stands for Jesus, Mary, and Joseph. It is often used to invoke the Holy Family and to symbolically consecrate one's work or efforts to the Holy Family and ask for their intercession.



The **Marian Cross** consists of the letter "M" for Mary, intertwined with the cross of Jesus. This symbolizes the deep connection between Mary and the redemptive mission of Jesus, and her steadfast presence at the foot of the cross.